



Decommissioning Management Plan (DMP)

Obsolete Equipment

SmartPly Europe DAC

Belview, Slieverue, Co Kilkenny



MALONE O'REGAN






Ground Floor – Unit 3
Bracken Business Park
Bracken Road, Sandyford
Dublin 18, D18 V32Y
Tel: +353- 1- 567 76 55
Email: enviro@mores.ie

Title: Decommissioning Management Plan (DMP), Obsolete Equipment, SmartPly, Belview, Slieverue, Co Kilkenny

Job Number: E2282

Prepared By: Michael Hulme

Signed: 

Checked By: Martin Kearns

Signed: 

Approved By: Klara Kovacic

Signed: 

Revision Record

Issue No.	Date	Description	Remark	Prepared	Checked	Approved
01	18/06/24	Report	Final	MH	MK	KK

Copyright and Third-Party Disclaimer

Malone O'Regan Environmental (MOR Environmental) has prepared this report for the sole use of our client (as named on the front of the report) in accordance with the Client's instructions using all reasonable skill and competence and generally accepted consultancy principles. The report was prepared in accordance with the budget and terms of reference agreed with the Client and does not in any way constitute advice to any third party who is able to access it by any means. MOR Environmental excludes to the fullest extent lawfully permitted all liability whatsoever for any costs, liabilities or losses arising as a result of or reliance upon the contents of this report by any person or legal entity (other than the Client in accordance with the terms of reference). MOR Environmental has not verified any documents or information supplied by third parties and referred to herein in compiling this document, and no warranty is provided as part of this document. No part of this report may be copied or reproduced without express written confirmation from MOR Environmental. Any methodology contained in this report is provided to the Client in confidence and must not be disclosed or copied to third parties without the prior written agreement of MOR Environmental. Disclosure of such information may constitute an actionable breach of confidence or may otherwise prejudice our commercial interests. Third parties who obtain access to this report by any means, including disclosure by the Client, will be subject to the Copyright and Third-Party Disclaimer contained herein.

Decommissioning Management Plan (DMP)
Obsolete Equipment
SmartPly
Belview, Slieverue, Co Kilkenny

Contents

1	SUMMARY	3
1.1	Report Preparation.....	3
2	INTRODUCTION	3
2.1	Methodology.....	3
2.2	Licence Requirements.....	3
3	SITE EVALUATION	4
3.1	Site Location.....	4
3.2	Site Layout.....	4
3.3	Operator Performance.....	5
3.3.1	Environmental Management System.....	5
3.4	Environmental Incidents.....	6
3.5	Environmental Pathways and Sensitivity.....	6
3.5.1	Geology / Hydrogeology:.....	6
3.5.2	Hydrology:.....	6
3.5.3	Designated Geological Sites:.....	6
3.5.4	Human Receptors:.....	6
3.5.5	Pathways – Emissions to Water.....	7
3.5.6	Pathways Emissions to Air.....	8
4	DECOMMISSIONING	8
4.1	Decommissioning Goals.....	8
4.2	Details of Obsolete Equipment.....	9
4.3	Timeframe.....	9
4.4	Pre-Decommissioning Works.....	10
4.5	Stages of Decommissioning Management Plan.....	11
4.5.1	Stage 1: Cleaning of the Obsolete Equipment.....	11

4.5.2	Stage 2: Removal of Hazardous and Non-Hazardous Wastes.....	11
4.5.3	Stage 3: Cleaning and surveying of Drains and Tanks	12
4.5.4	Stage 4: Testing, Validation, Documentation and Certification of Decommissioning Management Plan.....	12
5	DECOMMISSIONING PLAN VALIDATION AND MANAGEMENT	12
5.1	Decommissioning Validation Audit	12
5.2	Financial Provisions	12
6	CONCLUSION	13
7	REFERENCES.....	14

FIGURES

Figure 3-1: Site Location	4
Figure 3-2: Site Layout.....	5

TABLES

Table 3-1: Emissions to Surface Water	7
Table 3-2: Emissions to Air	8
Table 4-1: Programme and Timeframe in Weeks for Delivery	9
Table 4-2: Stages of DMP	11

APPENDICES

Appendix A: SmartPly ISO 140012015	
Appendix B: Project Phases and Durations	
Appendix C: 2024-Q1-OEE-Financial-Provision-Tables	

1 SUMMARY

Name: SmartPly Europe DAC

Address: Belview, Slieverue, Co. Kilkenny

Licence Ref. No.: P0001-05

Licensable activity: 8.7 – The production of one or more of the following wood-based panels: orientated strand board, particleboard or fibreboard with a production capacity exceeding 600m³ per day;

2.1 – Combustion of fuels in installations with a total rated thermal input of 50MW or more.

The Site is categorised as RBME Category A2.

1.1 Report Preparation

This report has been prepared by Malone O'Regan Environmental (MOR Environmental) on behalf of SmartPly Europe DAC (SmartPly).

Address: Ground Floor – Unit 3, Bracken Business Park,
Bracken Road, Sandyford, Dublin 18
D18 V32Y

2 INTRODUCTION

Malone O'Regan Environmental (MOR Environmental) was commissioned by SmartPly Europe DAC (SmartPly) to prepare a Decommissioning Management Plan (DMP) for the now redundant parts of the original Site at Belview, Co. Kilkenny. This has been actioned in response to the request made during the latest EPA site visit (site visit report SV29378) of licence P0001-05.

“The licensee shall submit a decommissioning plan for the now redundant parts of the original plant. This report shall detail how the licensee will comply with condition 10.1 of P0001-05 to decommission, render safe or remove for disposal/recovery any soil, subsoil, buildings, plant or equipment, or any waste, materials, substances or other matter contained therein or thereon, that may result in environmental pollution.”

SmartPly wishes to dismantle and remove several pieces of plant and equipment in a safe, structured, and organised fashion from within the existing building whilst the plant remains essentially in full 24/7 operation. The DMP addresses actions for potential liabilities that may occur, such as the decontamination of obsolete equipment and plants and the management of waste produced.

2.1 Methodology

The EPA's 'Guidance on Assessing and Costing Environmental Liabilities' published in January 2014 (EPA, 2014) was used as a methodology for preparing this DMP. In addition, the publication 'EPA Approach to Environmental Liabilities and Financial Provision' (EPA, 2019) circulated to all licensed facilities from the EPA was also considered.

MOR Environmental has been working with SmartPly since the original development of the Site and as such are very familiar with all Site operations.

2.2 Licence Requirements

This report has been prepared in order to generally comply with Condition 10 of the existing IE Licence P0001-05 as follows:

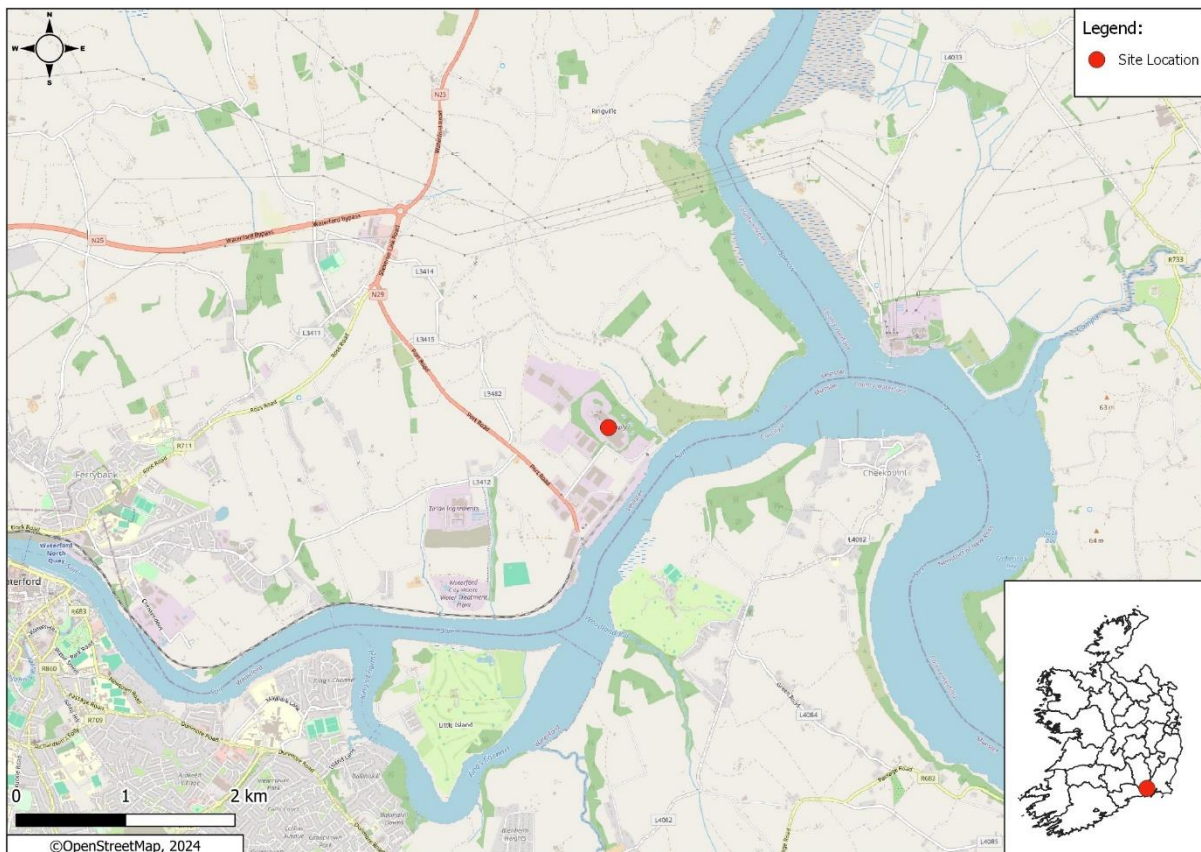
- Condition 10.1: *Following termination, or planned cessation for a period greater than six months, of use or involvement of all or part of the site in the licensed activity, the licensee shall, to the satisfaction of the Agency, decommission, render safe or remove for disposal/recovery any soil, subsoil, buildings, plant or equipment, or any waste, materials or substances or other matter contained therein or thereon, that may result in environmental pollution. A final validation report, which includes a certificate of completion to demonstrate there is no continuing risk to the environment, shall be submitted to the Agency within three months of termination or planned cessation of the activity.*

3 SITE EVALUATION

3.1 Site Location

The Site is situated adjacent to the Port of Waterford at Belview, Co. Kilkenny. The surrounding land use is port-related industries and agriculture, with some residential properties. The Site location is shown in Figure 3-1 below.

Figure 3-1: Site Location



3.2 Site Layout

The Site covers an area of approximately 73 acres (295,421 m²). The main production building and surrounding hardstanding comprise 66,905 m². The combined area of the log yard is 90,000m². The remainder of the Site is comprised of roads, grassed landscaped and/or planted areas.

Figure 3-2: Site Layout



3.3 Operator Performance

3.3.1 Environmental Management System

SmartPly manages environmental risks associated with on-site activities through an Environmental Management System (EMS), accredited to the ISO 14000:2015 standard.

SmartPly works to obtain a leadership role in the community by striving for ever-higher levels of environmental and ethical standards. Responsible environmental management is a core value of the business strategy. A prerequisite to all the operations is the commitment to protect the environment and prevent pollution. The scope of this policy covers the operations and activities associated with this Site.

The senior management and board of directors are accountable for:

- Ensuring compliance with all environmental laws, regulations and governmental policies and with the other requirements to which the organisation subscribes to relate its environmental aspects;
- Prevention of pollution by identifying the organisation's footprint on the environment, creating flexible systems to evaluate and enhance the responses plus the manufacturing practices and processes;
- Continual improvement by fostering creativity and innovation in the management and performance of the business, supporting research, implementing international best practices and introducing the best available technologies that minimise the footprint on the environment where feasible;

- Promote the preservation of natural resources and energy efficiency and continue with sustainable forestry practices through FSC Certification; and,
- Open and honest communication of this policy, the environmental management system principles and environmental topics in a transparent and easy way to understand to all interested parties, taking notice of the opinions of others.

The goal is to collaborate in building a sustainable society. This policy is reviewed annually to consider current and potential future business issues.

SmartPly operates a documented system for the management of environmental, safety, quality and operational systems onsite. The quality management system is certified to ISO 9001:2008, and the safety system is certified to ISO 18001:2014. The environmental management system has been certified to I.S. EN ISO 14001:2015 since October 2019 and was last amended in September 2023, attached as Appendix A.

3.4 Environmental Incidents

SmartPly operates under IED Licence P0001-05, which has been in effect since March 2024. They have been an EPA-licensed Site since 1995.

There were no environmental incidents reported in 2023. There were two complaints recorded in 2023, both of which were related to noise. Corrective actions were taken in response to both complaints. The first complaint related to noise from the Site, the following investigation identified and resolved an issue with the debarker outfeed conveyor motor. The second noise complaint was related to noise emitting from the energy plant sirens, which was subsequently resolved.

3.5 Environmental Pathways and Sensitivity

3.5.1 Geology / Hydrogeology:

The bedrock geology beneath the Site is mapped as the felsic volcanics in the Campile Formation. [1]. The bedrock aquifer is classified as a Regionally Important Aquifer – fissured bedrock; which is assigned a rating of extreme vulnerability [1]. Groundwater flow beneath the Site is to the southeast towards the River Suir, which is located approximately 250m to the southeast of the Site.

3.5.2 Hydrology:

The Site is within the Suir Catchment (Catchment ID: 16) [2]. The closest water bodies to the Site are the Luffany Stream and the Lower Suir Estuary. The Luffany (16L68) flows into the Suir (16_10207) from the closest point circa (c.) 230m southeast. The risk status of the Luffany under the water framework directive for 2016-2021 is currently under review, while the water quality status is 'Moderate'. The risk status of the Lower Suir Estuary is classified as at risk' under the Water Framework Directive 2016-2021, while the water quality is classified as 'Moderate' under the Water Framework Directive 2016-2021.

3.5.3 Designated Geological Sites:

The closest Natura 2000 sites are the Lower River Suir (SAC 002137) and, the River Barrow and The River Nore (SAC 002162) located c. 250m and 1.5km from the Site, respectively. The following proposed Natural Heritage areas are also within 5km of the Site: Barrow River Estuary (000698) and King's Channel (001702).

3.5.4 Human Receptors:

The surrounding land use is port-related industries and agricultural with some one-off residential properties, the closest of which is located circa (ca.) 50m southwest of the Site boundary.

3.5.5 Pathways – Emissions to Water

An inventory of licenced emission points (P0001-05) on the Site has been compiled. These are listed in Table 3-1 below:

Table 3-1: Emissions to Surface Water

ID	Description	Easting	Northing
SW-1A	Surface water	266231	113984
STP	Sewage Effluent	266226	113988

The primary way in which water drains from the Site is through surface water drainage, as the majority of the Site is currently covered by paving and site buildings. The remainder of the Site comprises:

- Loose gravel, low permeability soils, underlain with geotextile membrane which allows for free percolation of water while filtering potential debris and is solely used to store logs; and,
- Wooded areas and hedges which do not generate surface water runoff.

All storm water runoff falls to a drainage channel that is located along the perimeter of the Site. The storm water drainage system includes bar screens, silt fences, silt traps. An oil interceptor and two settlement ponds will be used to ensure that the discharges will not negatively impact water quality and ensure the continued protection of water-dependent species.

Storm water drains surrounding structures associated with the dryer/energy plant are open concrete drains with two silt traps installed. A filter storm drain surrounds the log yard.

The interceptor is located at the end of the drainage channel, and from there, the water discharges to the existing Settlement Pond. The Settlement Pond is divided into two by a wall and has a combined containment volume of 5,825m³. Water is held here to allow particulates to settle out of solution. Storm water in the ponds is discharged to the Lower Suir Estuary.

There is an Emergency Holding Tank located adjacent to the Settlement Ponds. In the event that storm water becomes contaminated, it is diverted to the Emergency Holding Tank. The Emergency Holding Tank is divided in two by a wall with a total storage volume of 5,825m³. This Emergency Holding Tank is dedicated to firewater retention. A minimum of two people per shift are trained to divert the contaminated water to this Emergency Holding Tank as part of SmartPly's standard operating procedures in an emergency event. In addition to this, signage is fixed in place at the diversion penstock, explaining the actions required.

Storm water monitoring takes place at SW-1A (Grid Ref: 266231E, 113984N) – the location approved by the Agency in Schedule B of IE Licence P0001-05. This monitoring point is at the settlement pond, prior to mixing with sewage treatment plant discharge. After passing through the settlement pond, stormwater is discharged to the Lower Suir Estuary at the approved discharge point (Grid Ref: 266532E, 113671N).

Foul sewage is generated from civil amenities such as the toilets and the canteen area. There are three sumps (Sumps A, B and C) located throughout the Site to allow for the collection of foul (sanitary) sewage.

The foul drainage lines are directed to an onsite treatment plant. - a rotating biological contactor (RBC), which generates a small amount of sludge. The treated effluent is then passed through a sampling chamber, licenced under Schedule B of IE licence P0001-05 as monitoring point STP (Grid Ref: 266226E, 113988N). After passing through the sampling chamber, the treated foul effluent is combined with the stormwater prior to discharge to the Lower Suir Estuary.

3.5.6 Pathways Emissions to Air

There will be no significant air emissions as a result of the removal of the obsolete equipment. Waste gases generated by the external dryer and biomass energy plant pass through cyclones before being directed to the Wet Electrostatic Precipitator (WESP) and then discharged to the atmosphere via the 90 metre (m) high stack (emission point A2-1). Emissions to air from the press are treated in the other existing WESP and emitted via emission point A2-1. Emissions are analysed for particulate matter, VOCs, carbon monoxide (CO), nitrogen oxides, formaldehyde, resins, aldehydes and sulphur dioxide. All emission points to air are listed in Table 3-2 below.

Table 3-2: Emissions to Air

Point Type	ID	Description
Main Emission	A2-1	WESPs - Main-stack A2-1
	A2-2	Baghouse 1 - Sanders
	A2-3	Baghouse 2 - Thayer, dry bin, reject bin, cyclone, dry flake storage bin
	A2-4	Baghouse 3- Dryer raw fuel storage bin/ to be replaced by granulate silo (cyclone flow unchanged).
	A2-5	Baghouse 4 - T&G tenoners
	A2-6	Baghouse 5 –Dry flake storage bins
	A2-7	Baghouse 6 - Diagonal and cut-to-size saws
	A2-8	Baghouse 7 - Forming line filter
	A2-9	Fuel reclaim filter

Emission points A2-2 to A2-8 are vented through the baghouse filters, while cyclone is used for dust abatement from emission point A2-9.

4 DECOMMISSIONING

4.1 Decommissioning Goals

The following goals have been identified as necessary to ensure a successful decommissioning program for the Site:

- The health and safety of all site personnel and any contractors undertaking works on-site will be preserved in accordance with the Safety, Health and Welfare at Work Act 2005 (as amended);
- All works to be completed as part of any decommissioning process will adhere to SmartPly's Fundamental Environmental Policy as outlined in the Environmental Manual;
- All waste will be handled, packaged, temporarily stored, recovered, recycled and/or disposed of offsite in accordance with the waste management plan (in place at the time);
- Records will be kept of all waste materials removed/and or disposed offsite. These records will be made available to the EPA for inspection if required;
- Access to monitoring locations will be maintained throughout the decommissioning process. If monitoring locations are to be removed/altered/blocked for any reason, permission will be sought from the EPA prior to any such actions; and,
- Compliance with the most up-to-date IE Licence conditions will be preserved throughout any such decommissioning process or until successful surrender of the licence has occurred.

4.2 Details of Obsolete Equipment

In 2022 SmartPly successfully completed its most recent expansion, this included upgrading to a new dryer, energy plant, and blenders. Subsequently all obsolete equipment was promptly decommissioned and written off. However, this idle equipment continues to occupy significant floorspace, gathering dust and increases the overall fire risk.

Equipment proposed for removal:

- Infeed Conveyor to Energy Plant: Energy plant in-feed fuel Conveyor & External in-feed conveyor with hopper;
- Old Energy Plant: Infeed conveyor, Fuel hopper, Transfer conveyors x3, Furnace, Emergency flue, Thermal Oil Flue HX, Flue Fan and ducting, Geko Thermal oil Heater, Geko Flue, Thermal Oil Pipework;
- Old Thermal Oil Pump Room: Pump Sets, Pipework, Thermal Oil Tanks, Supporting Platforms;
- Green Chip Conveyors x2;
- Bag House 3 & Dry Fuel Metering Bin & Ancillary Ducting: Bag House 3, Fuel metering, Duct Work, Exhaust Duct, Fuel Duct to Dryers;
- Thermal Plant Flue Duct to Dryers;
- Wet Bins x4;
- Dryers x4: Burner, Ancillary Fans / Ducts, Main Drum, Outlet Duct & Stack;
- Cyclones x3: External Cyclone x3, Internal Cyclone x3, Accompanying Ducting and Fans;
- Rotary Screens x3;
- Fire Dump Conveyor;
- Old Press 1.6m Extraction Duct;
- Old Thermal Oil Lines Flow and Return; and,
- Old Blender.

4.3 Timeframe

The project is anticipated to last for a duration of just over three months. In the event of any unforeseen delays, various contingencies have been put in place, including the extension of the contractor and project supervision agreements. A project timeline with a total of 20 phases, with 16 allocated for the decommissioning work, which is detailed in Table 4-1 below.

Table 4-1: Programme and Timeframe in Weeks for Delivery

DMP Phase	Description of DMP Phase	Duration
Setup	Preparation of Site for works	1 week
1	Dryer 1 and Conveyer	13 days
2	Furnace Flues x2	1 day
3	Fan and ducting system	3 days

DMP Phase	Description of DMP Phase	Duration
4	Furnace Conveyor System	4 days
5	Conveyor System	4 days
6	Dry Fuel Metering Bin	3 days
7	Ladgin Bin/Bag House	1 week
8	Primary Collectors/ Cyclones- Roof	4 weeks
9	Dryer 2,3 and 4	4 weeks
10	Primary Collector 2	1 week
11	Primary Collector 3	1 week
12	Primary Collector 4	1 week
13	Oil Pump Room	1 week
14	Extract Duct old Press	2 weeks
15	Thermal Oil Lines	3 weeks
16	Blender	1 week
Concrete Works	Removal of Concrete	3 weeks
Other	Snagging and Repairs	1 week
Demobilise	Clean-up and departure from the site	1 week
Total		74 days

4.4 Pre-Decommissioning Works

Before the project phases can begin, a number of works are required to prepare the Site, including the rerouting and installation of pipework.

Existing sprinkler pipework around the decommissioned equipment must be removed. This work involves draining, dismantling and removal of the redundant sprinkler system while also isolating and refilling the remaining pipework.

Another essential enabling work involves the expansion of an existing access and the creation of another to facilitate heavy machinery. The creation of the new access is planned to be carried out during phase 3 or 4 of the project, before any large machinery is required in the thermal oil room. The existing roller door is currently in place, which must be heightened to provide ample space for the larger machinery and trucks to access and remove the decommissioned equipment. Additionally, to facilitate the safe access of this larger machinery, new tarmacadam is required to be laid. These machines and removing trucks will be much heavier than the regular traffic on this roadway and the current surface condition is very poor in places. The combination of this poor road quality and the heavier loads may lead to equipment damage during drop-off and collection, potentially resulting in delays and increased costs.

4.5 Stages of Decommissioning Management Plan

There are 4 stages of the DMP, and these are described in Table 4-2.

Table 4-2: Stages of DMP

DMP Stage	Description of DMP Stage
Stage 1	Cleaning of the Obsolete Equipment
Stage 2	Removal of Wastes – Hazardous & Non-Hazardous.
Stage 3	Cleaning and surveying of Drains and Tanks.
Stage 4	Testing, Validation, Documentation and Certification of Decommissioning Management Plan.

4.5.1 Stage 1: Cleaning of the Obsolete Equipment

This stage is started after all equipment has been shut down and safely de-energised and when the production building has been emptied of all products, raw materials and wastes for disposal.

Specialist contractors can proceed to decommission and clean all components of the obsolete equipment. Specialist contractors are likely to encounter hazardous waste during this process. Therefore, this waste will need to be handled and disposed of in accordance with the relevant legislation.

As the equipment scheduled for removal will contain various materials and substances. Among these substances are motor oil, terminal oil, residual wood chips, ash from the old furnace, concrete, and diverse chemicals present in the equipment's paint and coatings etc. Careful handling and disposal measures to prevent adverse effects on the surrounding ecosystem must be implemented. An effective dust management plan must be implemented to account for the ash generated from the old furnace operations.

4.5.2 Stage 2: Removal of Hazardous and Non-Hazardous Wastes

To mitigate any potential contamination, an isolated area has been designated where removed material will be separated, classified, and stored safely. This material will be separated based on its type and composition and whether it is classified as hazardous or non-hazardous. All waste materials will be designated a list of waste (LoW) code as per the EPA Waste Classification Guidance on the classification and assessment of waste. [3] Separated material can then be organised, transported, and disposed of according to its designation. There will be on average four truckloads each day which will collect the separated material and transport for disposal to relevant licensed or permitted waste facility. Environmental certifications including waste transfer docket and gate receipts for the content of each truckload will be required for entering and leaving SmartPly.

In the case of hazardous waste disposal, all requirements of the IE Licence and all relevant waste legislation will be considered. This waste will require the prior written approval of the EPA before the waste can be removed from the Site. Stage 2 will include the following tasks:

- Administrative organisation of shipments;
- Removal of the waste in accordance with appropriate National and EU Legislation;
- Transport of wastes to the appropriately licensed waste facilities; and,
- Administrative organisation of relevant paperwork. All waste shipments during this period will be documented according to EPA Guidelines. This will facilitate the requirement to have stated criteria for proper decommissioning.

4.5.3 Stage 3: Cleaning and surveying of Drains and Tanks

In order to further prevent any environmental contamination from the decommissioning works, there will be a requirement to clean all the drains in the vicinity of the obsolete equipment. This will involve the use of a specialist contractor who will utilise mobile CCTV cameras. It is recommended that cleaning and surveying run in parallel so that any blockages detected by the camera can be cleared promptly. The survey will identify any repairs that will be required.

Any residual material removed from the drains will be appropriately disposed of offsite as required.

4.5.4 Stage 4: Testing, Validation, Documentation and Certification of Decommissioning Management Plan

Throughout the implementation of the DMP, documentation will be generated to track progress. All residues and wastes removed from the Site will be recorded, and final clearance certificates will be prepared. A full report will be prepared and submitted to the appropriate agencies.

A testing and validation programme will run throughout the DMP. Validation inspections will be conducted upon completion of each stage, to ensure that all elements of the DMP have been completed successfully. A full validation report will be prepared following the completion of all stages.

Based on currently available information, it is not envisaged that any significant soil or groundwater remediation will be required as there are no known emissions to either soil or groundwater from the obsolete equipment at the Site. Furthermore, unplanned events will be covered in the Environmental Liabilities Risk Assessment (ELRA) for the Site. Notwithstanding this, a Site investigation as part of an Independent Closure Audit (ICA) will be undertaken at the Site.

5 DECOMMISSIONING PLAN VALIDATION AND MANAGEMENT

To ensure comprehensive management of the DMP as it progresses, a SmartPly Management Team, supported by contracted Environmental Specialists, will coordinate, supervise and manage the DMP and be responsible for its implementation.

SmartPly will engage the services of third-party contractors as required in order to support the implementation of the scope of works as defined in the DMP.

5.1 Decommissioning Validation Audit

Upon completion of the DMP, SmartPly will conduct a validation audit in tandem with a suitably qualified consultant to demonstrate to the EPA that the closure plan has been successfully implemented. The qualification and experience of the independent auditor will be provided and agreed upon with the EPA prior to the validation commencing. In addition, the scope of the validation audit will be agreed upon in advance with the EPA, and following approval, the chosen independent auditor will complete the validation audit. The completed validation audit report will be submitted to the EPA for approval.

5.2 Financial Provisions

The EPA has provided a current list of EPA Facilities/Installations with Financial Provision Requirements attached as Appendix C. SmartPly is not deemed a licensed facility that poses a greater relative risk to the environment and, as such, is not required to assess its environmental liabilities and put financial provision in place.

6 CONCLUSION

Given the operational nature of the infrastructure to be removed, it is considered highly unlikely that any of the decommissioning activities will pose environmental risks. There are no known environmental liabilities for the Site as identified in this DMP. Therefore, the overall environmental footprint of the Site is limited, and decommissioning will be straightforward.

This decommissioning plan will be updated as required to ensure that the plan is in accordance with all best available technology.

7 REFERENCES

- [1] "GSI Spatial Resources (Geological Survey of Ireland)," 2024. [Online]. Available: <https://dcenr.maps.arcgis.com/apps/MapSeries/index.html?appid=a30af518e87a4c0ab2fbde2aaac3c228>. [Accessed 30 April 2024].
- [2] EPA, "EPA Maps," 2024. [Online]. Available: <https://gis.epa.ie/EPAMaps/Water?s=river>. [Accessed 30 April 2024].
- [3] EPA, "Waste Classification: Guidance on the Classification and Assessment of Waste," vol. 1, no. 2015.

APPENDICES

APPENDIX A



NSAI

Certificate of Registration of Environmental Management System to I.S. EN ISO 14001:2015

MEDITE SMARTPLY

Belview
Slieverue
Co. Waterford
Ireland
X91 PX75

NSAI certifies that the aforementioned company has been assessed and deemed to comply with the provisions of the standard referred to above in respect of:-

The manufacture, sale and supply of oriented strand board (OSB) and medium density fibreboard (MDF)

Approved by: Stewart Hickey
Head - Business Excellence, NSAI



Registration Number: 14.0750/1
Original Registration: 20 October 2019
Last amended on: 4 September 2023
Valid from: 4 September 2023
Remains valid to: 6 August 2026

This certificate remains valid on condition that the Approved Environmental Management System is maintained in an adequate and efficacious manner. NSAI is a partner of IQNet the international certification network (www.iqnetcertification.com)
This certificate is issued as part of multi-site certificate No. 14.0750HQ

Partner of:

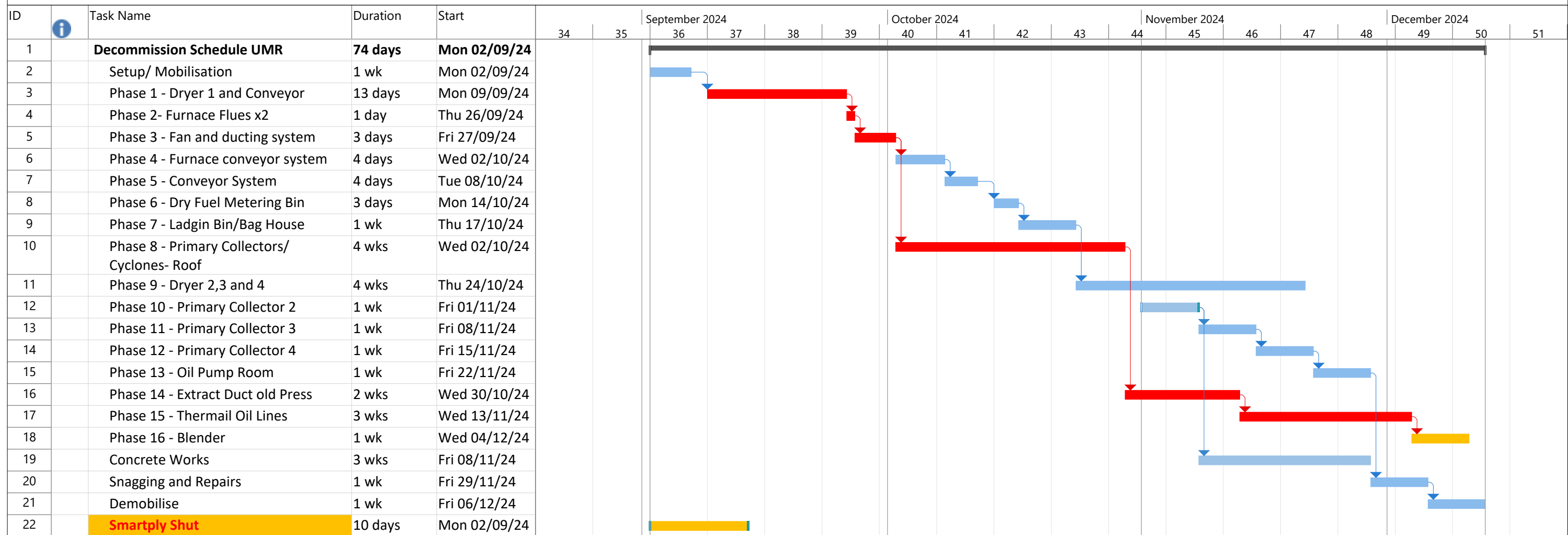


All valid certifications are listed on NSAI's website – www.n sai.ie. The continued validity of this certificate may be verified under "Certified Company Search"



NSAI (National Standards Authority of Ireland), 1 Swift Square, Northwood, Santry, Dublin 9, Ireland T +353 1 807 3800 E: info@nsai.ie www.n sai.ie

APPENDIX B



Project: Smartply_UMR Demoli Date: Thu 13/06/24	Task		Project Summary		Manual Task		Start-only		Deadline	
	Split		Inactive Task		Duration-only		Finish-only		Progress	
	Milestone		Inactive Milestone		Manual Summary Rollup		External Tasks		Manual Progress	
	Summary		Inactive Summary		Manual Summary		External Milestone			

APPENDIX C

OEE Financial Provision

EPA Facilities/Installations with Financial Provision Requirements

[Valid as of 31/03/24]

Contents

Table 1 - EPA Facilities/Installations with Financial Provision Requirements.....	2
Table 2 - Agreed ELRA Costs at EPA Facilities/Installations with Financial Provision Requirements.....	6
Table 3 - Agreed CRAMP Costs at EPA Facilities/Installations with Financial Provision Requirements.....	10
Table 4 - Financial Provision in Place at EPA Facilities/Installations with Financial Provision Requirements.....	15

Table 1 - EPA Facilities/Installations with Financial Provision Requirements [Valid as of 31/03/24]

Reg.	Licensee	County	Sector
P0004	Thermo Fisher Scientific Cork Limited	Cork	Chemical Sector
P0006	Sterling Pharma Ringaskiddy Limited	Cork	Chemical Sector
P0007	Astellas Ireland Company Limited	Dublin	Chemical Sector
P0009	Eli Lilly Kinsale Limited	Cork	Chemical Sector
P0010	Hovione Limited	Cork	Chemical Sector
P0011	MSD International GmbH	Tipperary	Chemical Sector
P0012	Roche Ireland Limited	Clare	Chemical Sector
P0013	Pfizer Ireland Pharmaceuticals (Ringaskiddy)	Cork	Chemical Sector
P0014	Sk Biotek Ireland Limited	Dublin	Chemical Sector
P0015	ZOETIS BELGIUM S.A	Wicklow	Chemical Sector
P0016	Janssen Pharmaceutical Sciences UC	Cork	Chemical Sector
P0018	Astellas Ireland Company Limited (Killorglin)	Kerry	Chemical Sector
P0019	Amgen Technology (Ireland)	Dublin	Chemical Sector
P0022	Fair Green Environmental Limited	Clare	Wood, Paper, Textiles & Leather Sector
P0025	Farragh Proteins	Cavan	Food & Drink Sector
P0027	Medite Europe Designated Activity Company	Tipperary	Wood, Paper, Textiles & Leather Sector
P0029	Irish Cement Limited (Limerick)	Limerick	Cement Sector
P0030	Irish Cement Limited (Platin)	Meath	Cement Sector
P0031	Crag Arklow Limited	Wicklow	Chemical Sector
P0034	Marinochem Limited	Cork	Chemical Sector
P0035	Aughinish Alumina Limited	Limerick	Chemical Sector
P0050	Guerbet Ireland Unlimited Company	Dublin	Chemical Sector
P0051	BOC Gases Ireland Limited	Dublin	Chemical Sector
P0052	BASF Ireland Limited	Cork	Chemical Sector
P0055	Kemek Limited	Meath	Chemical Sector
P0056	Colas Bitumen Emulsions (West) Limited	Galway	Chemical Sector
P0058	Kayfoam Woolfson	Dublin	Chemical Sector
P0060	Arch Chemicals BV	Dublin	Chemical Sector
P0062	Carl Zeiss Vision Ireland Limited	Wexford	Chemical Sector
P0070	Irish Oxygen Co. Limited	Cork	Chemical Sector
P0088	Vedanta Lisheen Mining Limited	Tipperary	Mineral & Other Materials Sector
P0089	Sigma-Aldrich Ireland Limited	Wicklow	Chemical Sector
P0110	Arran Chemical Company Limited	Roscommon	Chemical Sector
P0125	Clarochem Ireland Limited	Dublin	Chemical Sector
P0136	Upjohn Manufacturing Ireland Unlimited Company	Cork	Chemical Sector
P0207	Intel Ireland Limited	Kildare	Surface Coating Sector
P0224	ANALOG DEVICES INTERNATIONAL UNLIMITED COMPANY	Limerick	Class 13 Sectors
P0225	John Ronan & Sons	Tipperary	Wood, Paper, Textiles & Leather Sector
P0266	Irving Oil Whitegate Refinery Limited	Cork	Fossil Fuels Sector
P0274	Mr Patrick McCormack	Laois	Surface Coating Sector
P0322	Laois Sawmills Limited	Laois	Timber Treatment
P0325	PDM Timber Treatment Limited	Kildare	Timber Treatment
P0331	Spaight Timber Preservatives Limited	Tipperary	Timber Treatment
P0376	Premier Periclase Limited	Louth	Class 13 Sectors
P0378	Mannok Cement Limited	Cavan	Cement Sector
P0385	Galco (Waterford) Limited	Waterford	Metals Sector
P0390	Carbery Milk Products Limited	Cork	Food & Drink Sector
P0393	Kerry Ingredients (Ireland) Limited (Listowel)	Kerry	Food & Drink Sector
P0394	Wexal International Limited	Wexford	Metals Sector

Reg.	Licensee	County	Sector
P0404	Dairygold Co-operative Society Limited (Castlefarm)	Cork	Food & Drink Sector
P0419	Sunoco Bantry Bay Terminal Limited	Cork	Fossil Fuels Sector
P0442	Irish Distillers Limited	Cork	Food & Drink Sector
P0480	Dublin Aerospace Limited	Dublin	Surface Coating Sector
P0483	Huntstown Power Company Limited	Dublin	Energy Sector
P0486	Synergen Power Limited	Dublin	Energy Sector
P0487	Breedon Cement Ireland Limited	Meath	Cement Sector
P0516	Boliden Tara Mines Limited	Meath	Mineral & Other Materials Sector
P0517	Galmoy Mines Limited	Laois	Mineral & Other Materials Sector
P0519	Saint-Gobain Construction Products (Ireland) Limited	Monaghan	Mineral & Other Materials Sector
P0522	Barclay Chemicals Manufacturing Limited	Dublin	Chemical Sector
P0561	Electricity Supply Board (Aghada)	Cork	Energy Sector
P0571	Merck Millipore Limited	Cork	Surface Coating Sector
P0578	Electricity Supply Board (Marina)	Cork	Energy Sector
P0583	Xtratherm Limited	Meath	Chemical Sector
P0605	Electricity Supply Board	Clare	Energy Sector
P0606	SSE Generation Ireland Limited (Great Island)	Wexford	Energy Sector
P0607	SSE Generation Ireland Limited (Tarbert)	Kerry	Energy Sector
P0610	Electricity Supply Board (Lanesborough)	Longford	Energy Sector
P0611	Electricity Supply Board (West Offaly Power)	Offaly	Energy Sector
P0690	Decotek Automotive Limited	Westmeath	Surface Coating Sector
P0700	Tynagh Energy Limited	Galway	Energy Sector
P0738	Vermilion Exploration and Production Ireland Limited	Mayo	Fossil Fuels Sector
P0777	Energia Power Generation Limited	Dublin	Energy Sector
P0784	Boylan Print Limited	Louth	Surface Coating Sector
P0802	Aurivo Dairy Ingredients Limited	Roscommon	Food & Drink Sector
P0826	Cooley Distillery Unlimited Company	Louth	Food & Drink Sector
P0980	William Grant & Sons Irish Manufacturing Limited	Offaly	Food & Drink Sector
P0997	The Hammond Lane Metal Company Limited	Cork	Non-Hazardous Waste Transfer Stations Sector
P1002	The Hammond Lane Metal Company Limited	Dublin	Non-Hazardous Waste Transfer Stations Sector
P1006	Galway Metal Company Limited	Galway	Non-Hazardous Waste Transfer Stations Sector
P1011	Drogheda Port Company	Louth	Non-Hazardous Waste Transfer Stations Sector
P1015	Glanway Limited	Kilkenny	Non-Hazardous Waste Transfer Stations Sector
P1022	Dublin Port Company	Dublin	Hazardous Waste Transfer Stations Sector
P1063	Kildare County Council	Kildare	Landfill Sector
P1076	KMK Metals Recycling Limited	Westmeath	Hazardous Waste Transfer Stations Sector
P1093	Soltec (Ireland) Limited	Westmeath	Hazardous Waste Transfer Stations Sector
W0001	North Kerry Landfill Site	Kerry	Landfill Sector
W0003	Ballymount Baling Station	Dublin	Non-Hazardous Waste Transfer Stations Sector
W0004	Arthurstown Landfill	Kildare	Landfill Sector
W0009	Balleally Landfill	Dublin	Landfill Sector
W0010	Basketstown Landfill Facility	Meath	Landfill Sector
W0012	Kinsale Road Landfill	Cork	Landfill Sector
W0013	Carrowbrowne Landfill Site	Galway	Landfill Sector
W0014	Silliot Hill Landfill	Kildare	Landfill Sector
W0016	Killurin Landfill Site	Wexford	Landfill Sector
W0017	Gortadroma Landfill Site	Limerick	Landfill Sector
W0018	Kilbarry Landfill Site	Waterford	Landfill Sector
W0020	Scotch Corner Landfill	Monaghan	Landfill Sector
W0021	Derrinumera Landfill Facility	Mayo	Landfill Sector
W0023	Raffeen Landfill Site	Cork	Landfill Sector
W0024	Ballynacarrick Landfill Site	Donegal	Landfill Sector

Reg.	Licensee	County	Sector
W0025	Powerstown Landfill Site	Carlow	Landfill Sector
W0026	Kyletalesha Landfill	Laois	Landfill Sector
W0028	Ballydonagh Landfill	Westmeath	Landfill Sector
W0029	Derryclure Landfill	Offaly	Landfill Sector
W0030	Dunmore Landfill	Kilkenny	Landfill Sector
W0032	Dungarvan Waste Disposal Site	Waterford	Landfill Sector
W0034	Dundalk Landfill & Civic Waste Facility	Louth	Landfill Sector
W0036	Indaver Ireland Limited (Tolka Quay Road)	Dublin	Hazardous Waste Transfer Stations Sector
W0037	Tradaree Point E.T.P.	Clare	Landfill Sector
W0039	Starrus Eco Holdings Limited (Ballymount)	Dublin	Non-Hazardous Waste Transfer Stations Sector
W0041	Enva Ireland Limited (Shannon)	Clare	Hazardous Waste Transfer Stations Sector
W0044	Thornton's Recycling Centre (Ballyfermot)	Dublin	Non-Hazardous Waste Transfer Stations Sector
W0045	Key Waste Management Limited	Dublin	Non-Hazardous Waste Transfer Stations Sector
W0046	Ballylinan Landfill Site	Laois	Landfill Sector
W0048	Kilmurry South	Wicklow	Landfill Sector
W0049	Clonbulloge Ash Repository	Offaly	Landfill Sector
W0050	Veolia Environmental Services Technical Solutions Ltd	Cork	Hazardous Waste Transfer Stations Sector
W0053	Starrus Eco Holdings Limited (Fassaroe)	Wicklow	Non-Hazardous Waste Transfer Stations Sector
W0054	SRCL Limited	Dublin	Hazardous Waste Transfer Stations Sector
W0055	SRCL Limited	Dublin	Hazardous Waste Transfer Stations Sector
W0058	Starrus Eco Holdings Limited (Sligo)	Sligo	Non-Hazardous Waste Transfer Stations Sector
W0059	Ballaghaderreen Landfill	Roscommon	Landfill Sector
W0060	Whiteriver Landfill Site	Louth	Landfill Sector
W0062	Churchtown Landfill	Donegal	Landfill Sector
W0066	Rampere Landfill	Wicklow	Landfill Sector
W0067	Rathroeen Landfill	Mayo	Landfill Sector
W0068	Youghal Landfill	Cork	Landfill Sector
W0071	Marlinstown Landfill	Westmeath	Landfill Sector
W0074	Donohill Landfill	Tipperary	Landfill Sector
W0077	Corranure Landfill	Cavan	Landfill Sector
W0078	Ballaghveny Landfill	Tipperary	Landfill Sector
W0079	Starrus Eco Holdings Limited (Cookstown, Tallaght)	Dublin	Non-Hazardous Waste Transfer Stations Sector
W0080	Dillonsdown	Wicklow	Landfill Sector
W0081	Kilcullen Landfill Limited	Kildare	Landfill Sector
W0082	Starrus Eco Holdings Limited (Dock Road)	Limerick	Non-Hazardous Waste Transfer Stations Sector
W0089	Derryconnell Landfill	Cork	Landfill Sector
W0091	Bailieborough Landfill	Cavan	Landfill Sector
W0099	Safety Kleen Ireland Ltd	Dublin	Hazardous Waste Transfer Stations Sector
W0104	Bord Na Móna Recycling Limited	Offaly	Non-Hazardous Waste Transfer Stations Sector
W0106	Bruscar Bhearna Teoranta (Carrowbrowne)	Galway	Non-Hazardous Waste Transfer Stations Sector
W0109	Inagh	Clare	Landfill Sector
W0113	KMK Metals Recycling Limited	Offaly	Hazardous Waste Transfer Stations Sector
W0115	Soltec (Ireland) Limited	Westmeath	Hazardous Waste Transfer Stations Sector
W0116	Starrus Eco Holdings Limited (Butlerstown)	Waterford	Non-Hazardous Waste Transfer Stations Sector
W0129	Integrated Materials Solutions Limited Partnership	Dublin	Landfill Sector
W0131	Bord Na Móna Recycling Limited	Meath	Non-Hazardous Waste Transfer Stations Sector
W0136	Starrus Eco Holdings Limited (Munster)	Cork	Non-Hazardous Waste Transfer Stations Sector
W0140	Starrus Eco Holdings Limited (Slane)	Meath	Non-Hazardous Waste Transfer Stations Sector
W0144	Oxigen Environmental (Coes Road)	Louth	Non-Hazardous Waste Transfer Stations Sector
W0145	Enva Ireland Limited (Cork)	Cork	Hazardous Waste Transfer Stations Sector
W0146	Knockharley Landfill	Meath	Landfill Sector
W0148	City Bin Co Ltd	Galway	Non-Hazardous Waste Transfer Stations Sector

Reg.	Licensee	County	Sector
W0151	Murphy Concrete Manufacturing Limited	Meath	Landfill Sector
W0152	Oxigen Environmental (Robinhood)	Dublin	Non-Hazardous Waste Transfer Stations Sector
W0156	Mill Road Estates Limited	Kildare	Landfill Sector
W0165	Ballynagran Residual Landfill	Wicklow	Landfill Sector
W0167	Indaver Ireland Limited (Duleek)	Meath	Incineration Sector
W0169	Mulleady's Limited (Drumlish)	Longford	Non-Hazardous Waste Transfer Stations Sector
W0177	Starrus Eco Holdings Limited (Waterford City)	Waterford	Non-Hazardous Waste Transfer Stations Sector
W0178	East Galway Residual Landfill Site	Galway	Landfill Sector
W0183	Starrus Eco Holdings Limited (Millenium Business Park)	Dublin	Non-Hazardous Waste Transfer Stations Sector
W0184	Enva Ireland Limited (Portlaoise)	Laois	Hazardous Waste Transfer Stations Sector
W0185	Rilta Environmental	Dublin	Hazardous Waste Transfer Stations Sector
W0188	Starrus Eco Holdings Limited (Greenogue)	Dublin	Non-Hazardous Waste Transfer Stations Sector
W0191	Holmestown Waste Management Facility	Wexford	Landfill Sector
W0192	Enva Ireland Limited	Dublin	Hazardous Waste Transfer Stations Sector
W0194	Bord Na Móna Recycling Limited	Laois	Non-Hazardous Waste Transfer Stations Sector
W0196	JFK Environmental Limited	Dublin	Hazardous Waste Transfer Stations Sector
W0197	Mulleady's Limited (Mullingar)	Westmeath	Non-Hazardous Waste Transfer Stations Sector
W0201	Drehid Waste Management Facility	Kildare	Landfill Sector
W0205	Green Circular Economy Unlimited Company	Dublin	Non-Hazardous Waste Transfer Stations Sector
W0208	Oxigen Environmental (Merrywell)	Dublin	Hazardous Waste Transfer Stations Sector
W0211	ERAS ECO Ltd	Cork	Non-Hazardous Waste Transfer Stations Sector
W0217	Killarney Waste Disposal	Kerry	Non-Hazardous Waste Transfer Stations Sector
W0222	Bord Na Móna Recycling Limited	Dublin	Non-Hazardous Waste Transfer Stations Sector
W0227	Padraig Thornton Waste Disposal Limited	Dublin	Non-Hazardous Waste Transfer Stations Sector
W0232	Dublin Waste to Energy	Dublin	Incineration Sector
W0238	Starrus Eco Holdings Limited	Dublin	Non-Hazardous Waste Transfer Stations Sector
W0253	Clean (Irl) Refuse & Recycling Co.	Clare	Non-Hazardous Waste Transfer Stations Sector
W0254	Walshestown Restoration Ltd	Kildare	Landfill Sector
W0257	Country Clean Recycling Unlimited Company	Cork	Non-Hazardous Waste Transfer Stations Sector
W0261	Starrus Eco Holdings Limited (Cappagh)	Dublin	Non-Hazardous Waste Transfer Stations Sector
W0263	Irish Packaging Recycling Limited	Dublin	Non-Hazardous Waste Transfer Stations Sector
W0267	Hi-Volt Ireland Limited	Tipperary	Hazardous Waste Transfer Stations Sector
W0279	Rehab Glassco Limited	Kildare	Non-Hazardous Waste Transfer Stations Sector
W0283	Drehid Mechanical Biological Treatment (MBT) Facility	Kildare	Non-Hazardous Waste Transfer Stations Sector
W0286	Enva Ireland Limited	Meath	Hazardous Waste Transfer Stations Sector
W0291	Forge Hill Recycling Ltd	Cork	Non-Hazardous Waste Transfer Stations Sector
W0308	Healthbeacon Limited	Dublin	Hazardous Waste Transfer Stations Sector

Table 2 - Agreed ELRA Costs at EPA Facilities/Installations with Financial Provision Requirements [Valid as of 31/03/23]

Reg	Licensee	Agreed ELRA Cost €
P0004	Thermo Fisher Scientific Cork Limited - P0004	5,318,474.00
P0006	Sterling Pharma Ringaskiddy Limited - P0006	5,799,274.00
P0007	Astellas Ireland Company Limited - P0007	3,528,131.00
P0009	Eli Lilly Kinsale Limited - P0009	4,875,066.00
P0010	Hovione Limited - P0010	4,618,493.15
P0011	MSD International GmbH - P0011	4,171,590.00
P0012	Roche Ireland Limited - P0012	1,003,879.00
P0013	Pfizer Ireland Pharmaceuticals (Ringaskiddy) - P0013	8,569,163.00
P0014	Sk Biotek Ireland Limited - P0014	2,955,000.00
P0015	ZOETIS BELGIUM S.A - P0015	1,347,550.00
P0016	Janssen Pharmaceutical Sciences UC - P0016	5,088,218.00
P0019	Amgen Technology (Ireland) Unlimited Company - P0019	2,927,961.00
P0025	Farragh Proteins Unlimited Company - P0025	1,481,754.00
P0027	Medite Europe Designated Activity Company - P0027	1,259,650.00
P0029	Irish Cement Limited (Limerick) - P0029	6,232,080.00
P0030	Irish Cement Limited (Platin) - P0030	7,128,428.00
P0034	Marinochem Limited - P0034	1,377,740.00
P0035	Aughinish Alumina Limited - P0035	1,226,078.00
P0050	Guerbet Ireland Unlimited Company - P0050	2,808,316.00
P0051	BOC Gases Ireland Limited - P0051	1,673,023.00
P0052	BASF Ireland Designated Activity Company - P0052	5,128,204.00
P0056	Colas Bitumen Emulsions (West) Limited - P0056	2,818,152.00
P0058	Kayfoam Woolfson - P0058	283,704.00
P0088	Vedanta Lisheen Mining Limited - P0088	8,954,475.00
P0089	Sigma-Aldrich Ireland Limited - P0089	2,832,300.00
P0110	Arran Chemical Company Limited - P0110	1,232,340.00
P0125	Clarochem Ireland Limited - P0125	1,038,019.00
P0136	Upjohn Manufacturing Ireland Unlimited Company - P0136	4,948,234.00
P0207	Intel Ireland Limited - P0207	1,596,159.00
P0224	ANALOG DEVICES INTERNATIONAL UNLIMITED COMPANY - P0224	3,971,695.00
P0266	Irving Oil Whitegate Refinery Limited - P0266	53,050,000.00
P0322	Laois Sawmills Limited - P0322	1,386,882.00
P0325	PDM Timber Treatment Limited - P0325	2,649,468.00
P0376	Premier Periclase Limited - P0376	3,477,656.00
P0378	Mannok Cement Limited - P0378	307,340.00
P0385	Galco (Waterford) Limited - P0385	955,570.00
P0390	Carbery Food Ingredients Limited - P0390	1,250,000.00
P0393	Kerry Ingredients (Ireland) Limited (Listowel) - P0393	1,158,700.00
P0404	Dairygold Co-operative Society Limited (Castlefarm) - P0404	1,030,218.00
P0419	Zenith Energy Bantry Bay Terminal Ltd - P0419	62,270,000.00
P0442	Irish Distillers Limited - P0442	1,308,083.00
P0480	Dublin Aerospace Limited - P0480	2,514,848.00

Reg	Licensee	Agreed ELRA Cost €
P0483	Huntstown Power Company Limited - P0483	1,643,764.00
P0486	Synergen Power Limited - P0486	2,645,880.00
P0487	Breedon Cement Ireland Limited - P0487	1,561,122.00
P0516	Boliden Tara Mines Limited - P0516	12,722,382.00
P0517	Galmoy Mines Limited - P0517	3,049,150.00
P0519	Saint-Gobain Construction Products (Ireland) Limited - P0519	418,844.00
P0522	Barclay Chemicals Manufacturing Limited - P0522	2,955,878.00
P0561	Electricity Supply Board (Aghada) - P0561	2,547,240.00
P0571	Merck Millipore Limited - P0571	1,942,765.00
P0578	Electricity Supply Board (Marina) - P0578	925,500.00
P0583	Unilin Insulation Ireland Limited - P0583	3,421,500.00
P0605	Electricity Supply Board (Moneypoint) - P0605	5,055,720.00
P0606	SSE Generation Ireland Limited (Great Island) - P0606	12,807,830.00
P0607	SSE Generation Ireland Limited (Tarbert) - P0607	5,489,225.00
P0610	Electricity Supply Board (Lough Ree Power) - P0610	2,116,530.00
P0611	Electricity Supply Board (West Offaly Power) - P0611	1,388,490.00
P0690	Decotek Automotive Limited - P0690	968,100.00
P0700	Tynagh Energy Limited - P0700	1,884,776.00
P0738	Vermilion Exploration and Production Ireland Limited - P0738	7,265,119.00
P0777	Energia Power Generation Limited - P0777	1,643,764.00
P0802	Aurivo Dairy Ingredients Limited - P0802	1,398,432.00
P0826	Cooley Distillery Unlimited Company - P0826	459,876.00
P0980	William Grant & Sons Irish Manufacturing Limited - P0980	1,316,344.00
P0997	The Hammond Lane Metal Company Limited - P0997	2,714,456.00
P1002	The Hammond Lane Metal Company Limited - P1002	1,813,375.00
P1006	Galway Metal Company Limited - P1006	469,983.00
P1011	Drogheda Port Company (Tom Roes Point Port Terminal) - P1011	721,479.00
P1015	Glanway Limited - P1015	1,357,429.00
P1022	Dublin Port Company - P1022	1,443,434.00
P1076	KMK Metals Recycling Limited - P1076	2,262,656.00
P1093	Soltec (Ireland) Limited - P1093	2,105,400.00
W0003	Ballymount Baling Station - W0003	1,150,849.00
W0036	Indaver Ireland Limited (Tolka Quay Road), Dublin Port - W0036	4,333,042.00
W0039	Starrus Eco Holdings Limited (Ballymount) - W0039	1,345,743.00
W0041	Enva Ireland Limited (Shannon) - W0041	3,610,477.00
W0044	Thorntons Recycling Centre (Ballyfermot) - W0044	786,862.00
W0045	Key Waste Management Limited - W0045	591,417.00
W0048	Kilmurry South - W0048	440,539.00
W0049	Clonbulloge Ash Repository - W0049	585,806.55
W0050	Veolia Environmental Services Technical Solutions Ltd, Corrin, Fermoy, Cork - W0050	3,912,142.00
W0053	Starrus Eco Holdings Limited (Fassaroe) - W0053	1,429,825.00
W0054	SRCL Limited (Kylemore Road) trading as Eco-Safe Systems Ltd, Allied Industrial Estate, Kylemore Road, Dublin 10 - W0054	6,991,993.00
W0055	SRCL Limited - W0055	178,861.80

Reg	Licensee	Agreed ELRA Cost €
W0058	Starrus Eco Holdings Limited (Sligo) - W0058	1,012,674.00
W0079	Starrus Eco Holdings Limited (Cookstown, Tallaght) - W0079	992,738.00
W0081	Kilcullen Landfill Limited - W0081	1,843,500.00
W0082	Starrus Eco Holdings Limited (Dock Road) - W0082	2,112,643.00
W0099	Safety Kleen Ireland Ltd - W0099	2,317,362.00
W0104	Bord Na Móna Recycling Limited - W0104	1,631,172.00
W0106	Bruscar Bhearna Teoranta (Carrowbrowne) - W0106	865,887.90
W0113	KMK Metals Recycling Limited - W0113	2,257,877.00
W0115	Soltec (Ireland) Limited - W0115	2,056,800.00
W0116	Starrus Eco Holdings Limited (Butlerstown) - W0116	703,266.00
W0129	Integrated Materials Solutions Limited Partnership - W0129	358,227.00
W0131	Bord Na Móna Recycling Limited - W0131	756,000.00
W0136	Starrus Eco Holdings Limited (Munster) - W0136	2,216,617.00
W0140	Starrus Eco Holdings Limited (Slane) - W0140	1,292,176.00
W0144	Oxigen Environmental (Coes Road) - W0144	565,000.00
W0145	Enva Ireland Limited (Cork) - W0145	487,696.00
W0146	Knockharley Landfill - W0146	3,502,650.00
W0148	City Bin Co Ltd - W0148	313,896.00
W0151	Murphy Concrete Manufacturing Limited - W0151	415,399.00
W0152	Oxigen Environmental (Robinhood) - W0152	610,000.00
W0156	Mill Road Estates Limited - W0156	72,267.50
W0165	Ballynagran Residual Landfill - W0165	3,403,003.00
W0167	Indaver Ireland Limited (Duleek) - W0167	4,007,193.00
W0169	Mulleady's Limited (Drumlish) - W0169	684,630.00
W0177	Starrus Eco Holdings Limited (Waterford City) - W0177	1,000,012.00
W0178	East Galway Residual Landfill Site - W0178	2,703,600.00
W0183	Starrus Eco Holdings Limited (Millenium Business Park) - W0183	2,003,592.00
W0184	Enva Ireland Limited (Portlaoise) - W0184	4,133,343.00
W0185	Rilta Environmental - W0185	1,894,320.00
W0188	Starrus Eco Holdings Limited (Greenogue) - W0188	992,738.00
W0192	Enva Ireland Limited - W0192	4,695,025.00
W0194	Bord Na Móna Recycling Limited - W0194	690,109.00
W0196	JFK Environmental Limited - W0196	1,074,240.00
W0197	Mulleady's Limited (Mullingar) - W0197	274,683.00
W0201	Drehid Waste Management Facility - W0201	3,681,720.00
W0205	Green Circular Economy Unlimited Company - W0205	1,308,160.00
W0211	ERAS ECO Ltd - W0211	2,498,470.00
W0217	Killarney Waste Disposal Unlimited Company - W0217	905,019.00
W0222	Bord Na Móna Recycling Limited - W0222	459,482.40
W0227	Padraig Thornton Waste Disposal Limited - W0227	725,935.00
W0232	Dublin Waste to Energy Limited - W0232	5,408,220.00
W0238	Starrus Eco Holdings Limited - W0238	1,326,294.00
W0253	Clean (Irl) Refuse & Recycling Co. - W0253	1,089,163.00
W0254	Walshestown Restoration Ltd - W0254	205,695.00

Reg	Licensee	Agreed ELRA Cost €
W0257	Country Clean Recycling Unlimited Company - W0257	1,182,547.00
W0261	Starrus Eco Holdings Limited (Cappagh) - W0261	1,260,021.00
W0263	Irish Packaging Recycling - W0263	1,300,593.00
W0267	Hi-Volt Ireland Limited - W0267	3,946,794.00
W0279	Glassco Recycling Limited - W0279	433,501.00
W0286	Enva Ireland Limited - W0286	1,445,000.00
W0291	Forge Hill Recycling Unlimited Company - W0291	632,309.00
W0308	Healthbeacon Limited - W0308	403,353.00

**Table 3 - Agreed CRAMP Costs at EPA Facilities/Installations with Financial Provision Requirements
[Valid as of 31/03/24]**

Reg	Licensee	Agreed CRAMP Cost €
P0004	Thermo Fisher Scientific Cork Limited - P0004	19,412,178.00
P0006	Sterling Pharma Ringaskiddy Limited - P0006	3,935,420.00
P0007	Astellas Ireland Company Limited - P0007	2,767,420.00
P0009	Eli Lilly Kinsale Limited - P0009	25,000,000.00
P0010	Hovione Limited - P0010	5,557,278.27
P0011	MSD International GmbH - P0011	5,827,039.00
P0012	Roche Ireland Limited - P0012	9,844,136.00
P0013	Pfizer Ireland Pharmaceuticals (Ringaskiddy) - P0013	11,793,862.00
P0014	Sk Biotek Ireland Limited - P0014	6,923,000.00
P0015	ZOETIS BELGIUM S.A - P0015	7,981,646.00
P0016	Janssen Pharmaceutical Sciences UC - P0016	5,457,433.00
P0018	Astellas Ireland Company Limited (Killorglin) - P0018	1,749,336.00
P0019	Amgen Technology (Ireland) Unlimited Company - P0019	3,894,442.00
P0022	Fair Green Environmental Limited - P0022	214,500.00
P0025	Farragh Proteins Unlimited Company - P0025	1,054,846.00
P0027	Medite Europe Designated Activity Company - P0027	2,802,947.00
P0029	Irish Cement Limited (Limerick) - P0029	25,582,753.00
P0030	Irish Cement Limited (Platin) - P0030	15,874,069.00
P0031	Crag Arklow Limited - P0031	249,450.00
P0034	Marinochem Limited - P0034	646,471.00
P0035	Aughinish Alumina Limited - P0035	24,635,776.00
P0050	Guerbet Ireland Unlimited Company - P0050	1,934,199.00
P0051	BOC Gases Ireland Limited - P0051	1,678,957.00
P0052	BASF Ireland Designated Activity Company - P0052	3,783,081.00
P0056	Colas Bitumen Emulsions (West) Limited - P0056	2,018,404.00
P0058	Kayfoam Woolfson - P0058	276,111.00
P0060	Arch Chemicals BV - P0060	501,404.40
P0062	Carl Zeiss Vision Ireland Limited - P0062	1,809,350.00
P0070	Irish Oxygen Co. Limited - P0070	135,744.00
P0088	Vedanta Lisheen Mining Limited - P0088	4,239,080.00
P0089	Sigma-Aldrich Ireland Limited - P0089	2,389,450.00
P0110	Arran Chemical Company Limited - P0110	1,880,259.00
P0125	Clarochem Ireland Limited - P0125	1,566,290.00
P0136	Upjohn Manufacturing Ireland Unlimited Company - P0136	7,469,575.00
P0207	Intel Ireland Limited - P0207	53,838,290.00
P0224	ANALOG DEVICES INTERNATIONAL UNLIMITED COMPANY - P0224	3,394,926.00
P0266	Irving Oil Whitegate Refinery Limited - P0266	15,000,000.00
P0325	PDM Timber Treatment Limited - P0325	3,652,430.00
P0376	Premier Periclase Limited - P0376	7,066,617.00
P0378	Mannok Cement Limited - P0378	1,502,910.00
P0385	Galco (Waterford) Limited - P0385	642,115.00

Reg	Licensee	Agreed CRAMP Cost €
P0389	Goldenville Limited - P0389	478,955.00
P0390	Carbery Food Ingredients Limited - P0390	2,660,481.00
P0393	Kerry Ingredients (Ireland) Limited (Listowel) - P0393	1,250,245.00
P0404	Dairygold Co-operative Society Limited (Castlefarm) - P0404	1,035,870.00
P0419	Zenith Energy Bantry Bay Terminal Ltd - P0419	3,162,739.00
P0442	Irish Distillers Limited - P0442	2,840,753.00
P0480	Dublin Aerospace Limited - P0480	960,975.00
P0483	Huntstown Power Company Limited - P0483	3,071,466.00
P0486	Synergen Power Limited - P0486	1,612,531.00
P0487	Breedon Cement Ireland Limited - P0487	5,658,733.00
P0516	Boliden Tara Mines Limited - P0516	17,031,203.94
P0517	Galmoy Mines Limited - P0517	1,129,677.00
P0519	Saint-Gobain Construction Products (Ireland) Limited - P0519	2,568,066.00
P0522	Barclay Chemicals Manufacturing Limited - P0522	2,176,900.78
P0561	Electricity Supply Board (Aghada) - P0561	1,909,354.00
P0571	Merck Millipore Limited - P0571	2,656,641.00
P0578	Electricity Supply Board (Marina) - P0578	2,306,500.00
P0583	Unilin Insulation Ireland Limited - P0583	1,127,113.80
P0605	Electricity Supply Board (Moneypoint) - P0605	10,388,518.00
P0606	SSE Generation Ireland Limited (Great Island) - P0606	2,814,026.00
P0607	SSE Generation Ireland Limited (Tarbert) - P0607	3,939,353.00
P0610	Electricity Supply Board (Lough Ree Power) - P0610	5,596,277.00
P0611	Electricity Supply Board (West Offaly Power) - P0611	17,309,315.00
P0690	Decotek Automotive Limited - P0690	232,568.00
P0700	Tynagh Energy Limited - P0700	615,540.00
P0738	Vermilion Exploration and Production Ireland Limited - P0738	11,754,391.00
P0777	Energia Power Generation Limited - P0777	3,191,537.00
P0784	Boylan Print Limited - P0784	151,259.00
P0802	Aurivo Dairy Ingredients Limited - P0802	200,000.00
P0826	Cooley Distillery Unlimited Company - P0826	442,373.00
P0980	William Grant & Sons Irish Manufacturing Limited - P0980	1,607,098.00
P0997	The Hammond Lane Metal Company Limited - P0997	604,807.00
P1002	The Hammond Lane Metal Company Limited - P1002	551,193.00
P1006	Galway Metal Company Limited - P1006	176,122.50
P1011	Drogheda Port Company (Tom Roes Point Port Terminal) - P1011	458,916.00
P1015	Glanway Limited - P1015	1,108,210.00
P1022	Dublin Port Company - P1022	4,424,350.00
P1063	Kildare County Council - P1063	35,223,466.00
P1076	KMK Metals Recycling Limited - P1076	151,597.00
P1093	Soltec (Ireland) Limited - P1093	88,023.00
W0001	North Kerry Landfill Site - W0001	10,297,771.00
W0003	Ballymount Baling Station - W0003	293,133.50
W0004	Arthurstown Landfill - W0004	16,932,284.00
W0009	Balleally Landfill - W0009	26,959,406.00

Reg	Licensee	Agreed CRAMP Cost €
W0012	Kinsale Road Landfill - W0012	28,384,603.00
W0013	Carrowbrowne Landfill Site - W0013	5,087,213.53
W0014	Silliot Hill Landfill - W0014	5,698,534.00
W0016	Killurin Landfill Site - W0016	5,897,573.00
W0017	Gortadroma Landfill Site - W0017	5,696,344.00
W0020	Scotch Corner Landfill - W0020	18,040,324.00
W0021	Derrinumera Landfill Facility - W0021	11,451,113.00
W0023	Raffeen Landfill Site - W0023	13,379,050.00
W0024	Ballynacarrick Landfill Site - W0024	7,500,000.00
W0025	Powerstown Landfill Site - W0025	4,274,463.00
W0026	Kyletalesha Landfill - W0026	1,986,048.00
W0028	Ballydonagh Landfill - W0028	2,005,000.00
W0030	Dunmore Landfill - W0030	2,689,812.00
W0034	Dundalk Landfill & Civic Waste Facility - Dundalk Town Council - W0034	3,211,582.00
W0036	Indaver Ireland Limited (Tolka Quay Road), Dublin Port - W0036	1,376,363.00
W0037	Tradaree Point E.T.P. - W0037	4,763,934.00
W0039	Starrus Eco Holdings Limited (Ballymount) - W0039	117,205.00
W0041	Enva Ireland Limited (Shannon) - W0041	2,537,046.00
W0044	Thorntons Recycling Centre (Ballyfermot) - W0044	401,597.00
W0045	Key Waste Management Limited - W0045	303,624.00
W0048	Kilmurry South - W0048	837,584.06
W0049	Clonbulloge Ash Repository - W0049	1,816,039.00
W0050	Veolia Environmental Services Technical Solutions Ltd, Corrin, Fermoy, Cork - W0050	1,083,457.00
W0053	Starrus Eco Holdings Limited (Fassaroe) - W0053	210,537.00
W0054	SRCL Limited (Kylemore Road) trading as Eco-Safe Systems Ltd, Allied Industrial Estate, Kylemore Road, Dublin 10 - W0054	634,987.00
W0055	SRCL Limited - W0055	163,883.00
W0058	Starrus Eco Holdings Limited (Sligo) - W0058	72,147.00
W0059	Ballaghaderreen Landfill - W0059	2,176,061.00
W0060	Whiteriver Landfill Site - W0060	8,199,130.00
W0062	Churchtown Landfill - W0062	1,102,385.00
W0066	Rampere Landfill - W0066	2,286,460.00
W0067	Rathroeen Landfill - W0067	10,283,298.00
W0068	Youghal Landfill - W0068	25,280,535.00
W0071	Marlinstown Landfill - W0071	926,642.00
W0074	Donohill Landfill - W0074	11,941,031.00
W0077	Corranure Landfill - W0077	5,323,838.00
W0078	Ballaghveny Landfill - W0078	13,846,671.00
W0079	Starrus Eco Holdings Limited (Cookstown, Tallaght) - W0079	52,481.00
W0081	Kilcullen Landfill Limited - W0081	5,385,500.00
W0082	Starrus Eco Holdings Limited (Dock Road) - W0082	721,349.00
W0089	Derryconnell Landfill - W0089	4,131,511.00
W0091	Bailieborough Landfill - W0091	1,445,519.00
W0099	Safety Kleen Ireland Ltd - W0099	287,135.00

Reg	Licensee	Agreed CRAMP Cost €
W0104	Bord Na Móna Recycling Limited - W0104	115,433.00
W0106	Bruscar Bhearna Teoranta (Carrowbrowne) - W0106	700,782.50
W0113	KMK Metals Recycling Limited - W0113	330,450.00
W0115	Soltec (Ireland) Limited - W0115	134,309.00
W0116	Starrus Eco Holdings Limited (Butlerstown) - W0116	54,206.00
W0129	Integrated Materials Solutions Limited Partnership - W0129	927,906.00
W0131	Bord Na Móna Recycling Limited - W0131	2,648,251.00
W0136	Starrus Eco Holdings Limited (Munster) - W0136	546,998.00
W0140	Starrus Eco Holdings Limited (Slane) - W0140	396,728.00
W0144	Oxigen Environmental (Coes Road) - W0144	312,000.00
W0145	Enva Ireland Limited (Cork) - W0145	178,590.00
W0146	Knockharley Landfill - W0146	10,344,500.00
W0148	City Bin Co Ltd - W0148	66,105.00
W0151	Murphy Concrete Manufacturing Limited - W0151	655,643.45
W0152	Oxigen Environmental (Robinhood) - W0152	344,000.00
W0156	Mill Road Estates Limited - W0156	189,027.54
W0165	Ballynagran Residual Landfill - W0165	10,106,800.00
W0167	Indaver Ireland Limited (Duleek) - W0167	3,713,363.01
W0169	Mulleady's Limited (Drumlish) - W0169	128,704.00
W0177	Starrus Eco Holdings Limited (Waterford City) - W0177	79,855.00
W0178	East Galway Residual Landfill Site - W0178	13,789,117.00
W0183	Starrus Eco Holdings Limited (Millenium Business Park) - W0183	345,575.00
W0184	Enva Ireland Limited (Portlaoise) - W0184	2,527,406.00
W0185	Rilta Environmental - W0185	153,190.00
W0188	Starrus Eco Holdings Limited (Greenogue) - W0188	85,459.00
W0191	Holmestown Waste Management Facility - W0191	5,987,850.00
W0192	Enva Ireland Limited - W0192	1,682,363.75
W0194	Bord Na Móna Recycling Limited - W0194	100,351.00
W0196	JFK Environmental Limited - W0196	281,697.33
W0197	Mulleady's Limited (Mullingar) - W0197	58,545.00
W0201	Drehid Waste Management Facility - W0201	13,030,634.00
W0205	Green Circular Economy Unlimited Company - W0205	1,054,488.00
W0211	ERAS ECO Ltd - W0211	128,280.00
W0217	Killarney Waste Disposal Unlimited Company - W0217	443,748.00
W0222	Bord Na Móna Recycling Limited - W0222	419,103.10
W0227	Padraig Thornton Waste Disposal Limited - W0227	167,441.00
W0232	Dublin Waste to Energy Limited - W0232	15,389,220.00
W0238	Starrus Eco Holdings Limited - W0238	119,645.00
W0253	Clean (Irl) Refuse & Recycling Co. - W0253	556,381.00
W0254	Walshestown Restoration Ltd - W0254	1,754,192.00
W0257	Country Clean Recycling Unlimited Company - W0257	693,858.00
W0261	Starrus Eco Holdings Limited (Cappagh) - W0261	123,256.00
W0263	Irish Packaging Recycling - W0263	82,840.00
W0267	Hi-Volt Ireland Limited - W0267	111,839.00

Reg	Licensee	Agreed CRAMP Cost €
W0279	Glassco Recycling Limited - W0279	384,117.00
W0286	Enva Ireland Limited - W0286	137,172.00
W0291	Forge Hill Recycling Unlimited Company - W0291	163,960.00
W0308	Healthbeacon Limited - W0308	133,815.00

**Table 4 - Financial Provision in Place at EPA Facilities/Installations with Financial Provision Requirements
[Valid as of 31/03/24]**

Reg	Licensee	FP Instrument Type	Value
P0004	Thermo Fisher Scientific Cork Limited - P0004	Bond	19,412,178.00
P0004	Thermo Fisher Scientific Cork Limited - P0004	Insurance	5,320,000.00
P0006	Sterling Pharma Ringaskiddy Limited - P0006	Bond	3,935,420.00
P0006	Sterling Pharma Ringaskiddy Limited - P0006	Insurance	5,799,274.00
P0007	Astellas Ireland Company Limited - P0007	Parent Company Guarantee	2,767,420.00
P0007	Astellas Ireland Company Limited - P0007	Insurance	3,528,131.00
P0009	Eli Lilly Kinsale Limited - P0009	Bond	30,000,000.00
P0010	Hovione Limited - P0010	Parent Company Guarantee	5,557,278.27
P0010	Hovione Limited - P0010	Insurance	4,618,493.00
P0011	MSD International GmbH - P0011	Bond	9,998,629.00
P0012	Roche Ireland Limited - P0012	Parent Company Guarantee	5,079,685.00
P0012	Roche Ireland Limited - P0012	Bond	10,611,629.00
P0013	Pfizer Ireland Pharmaceuticals (Ringaskiddy) - P0013	Parent Company Guarantee	20,363,025.00
P0014	Sk Biotek Ireland Limited - P0014	Bond	10,000,000.00
P0015	ZOETIS BELGIUM S.A - P0015	Bond	9,329,196.00
P0016	Janssen Pharmaceutical Sciences UC - P0016	Bond	5,457,433.00
P0016	Janssen Pharmaceutical Sciences UC - P0016	Insurance	5,008,218.00
P0018	Astellas Ireland Company Limited (Killorglin) - P0018	Parent Company Guarantee	1,749,336.00
P0019	Amgen Technology (Ireland) Unlimited Company - P0019	Bond	6,822,403.00
P0019	Amgen Technology (Ireland) Unlimited Company - P0019	Parent Company Guarantee	1,725,779.00
P0022	Fair Green Environmental Limited - P0022	Bond	214,500.00
P0025	Farragh Proteins Unlimited Company - P0025	Bond	1,054,846.00
P0025	Farragh Proteins Unlimited Company - P0025	Insurance	1,481,754.00
P0027	Meditate Europe Designated Activity Company - P0027	Parent Company Guarantee	2,999,014.00
P0029	Irish Cement Limited (Limerick) - P0029	Bond	13,332,035.00
P0030	Irish Cement Limited (Platin) - P0030	Bond	23,002,497.00
P0031	Crag Arklow Limited - P0031	Secured Bank Account	249,450.00
P0034	Marinochem Limited - P0034	Parent Company Guarantee	2,024,211.00
P0035	Aughinish Alumina Limited - P0035	Parent Company Guarantee	14,000,000.00
P0035	Aughinish Alumina Limited - P0035	Secured Bank Account	14,000,000.00
P0050	Guerbet Ireland Unlimited Company - P0050	Bond	4,742,515.00
P0051	BOC Gases Ireland Limited - P0051	Insurance	1,673,023.00
P0051	BOC Gases Ireland Limited - P0051	Bond	1,678,957.00
P0052	BASF Ireland Designated Activity Company - P0052	Parent Company Guarantee	7,904,900.00
P0056	Colas Bitumen Emulsions (West) Limited - P0056	Bond	1,028,820.00
P0056	Colas Bitumen Emulsions (West) Limited - P0056	Parent Company Guarantee	989,584.00
P0056	Colas Bitumen Emulsions (West) Limited - P0056	Bond	2,818,152.00
P0058	Kayfoam Woolfson - P0058	Bond	276,111.00
P0058	Kayfoam Woolfson - P0058	Insurance	283,704.00
P0060	Arch Chemicals BV - P0060	Letter of Credit	501,404.40
P0062	Carl Zeiss Vision Ireland Limited - P0062	Parent Company Guarantee	809,350.00

Reg	Licensee	FP Instrument Type	Value
P0062	Carl Zeiss Vision Ireland Limited - P0062	Bond	1,000,000.00
P0088	Vedanta Lisheen Mining Limited - P0088	Secured Bank Account	4,338,113.00
P0088	Vedanta Lisheen Mining Limited - P0088	Insurance	8,954,475.00
P0089	Sigma-Aldrich Ireland Limited - P0089	Parent Company Guarantee	5,221,750.00
P0110	Arran Chemical Company Limited - P0110	Parent Company Guarantee	1,313,000.00
P0125	Clarochem Ireland Limited - P0125	Insurance	1,038,019.00
P0136	Upjohn Manufacturing Ireland Unlimited Company - P0136	Letter of Credit	12,000,000.00
P0207	Intel Ireland Limited - P0207	Parent Company Guarantee	19,100,541.00
P0224	ANALOG DEVICES INTERNATIONAL UNLIMITED COMPANY - P0224	Parent Company Guarantee	7,205,234.00
P0266	Irving Oil Whitegate Refinery Limited - P0266	Bond	46,900,000.00
P0266	Irving Oil Whitegate Refinery Limited - P0266	Bond	15,000,000.00
P0325	PDM Timber Treatment Limited - P0325	Bond	3,652,430.00
P0325	PDM Timber Treatment Limited - P0325	Insurance	2,649,468.00
P0376	Premier Periclase Limited - P0376	Insurance	3,477,656.00
P0376	Premier Periclase Limited - P0376	Bond	467,000.00
P0376	Premier Periclase Limited - P0376	Bond	3,494,117.00
P0376	Premier Periclase Limited - P0376	Bond	3,106,983.00
P0378	Mannok Cement Limited - P0378	Bond	1,901,450.00
P0378	Mannok Cement Limited - P0378	Insurance	307,340.00
P0385	Galco (Waterford) Limited - P0385	Parent Company Guarantee	525,000.00
P0385	Galco (Waterford) Limited - P0385	Bond	117,115.00
P0385	Galco (Waterford) Limited - P0385	Insurance	955,650.00
P0389	Goldenville Limited - P0389	Secured Bank Account	478,955.00
P0390	Carbery Food Ingredients Limited - P0390	Bond	2,660,481.00
P0390	Carbery Food Ingredients Limited - P0390	Bond	1,250,000.00
P0393	Kerry Ingredients (Ireland) Limited (Listowel) - P0393	Insurance	1,292,506.00
P0393	Kerry Ingredients (Ireland) Limited (Listowel) - P0393	Bond	316,237.00
P0393	Kerry Ingredients (Ireland) Limited (Listowel) - P0393	Parent Company Guarantee	934,008.00
P0394	Wexal International Limited - P0394	Letter of Comfort	
P0404	Dairygold Co-operative Society Limited (Castlefarm) - P0404	Bond	2,066,088.00
P0419	Zenith Energy Bantry Bay Terminal Ltd - P0419	Bond	3,162,739.00
P0419	Zenith Energy Bantry Bay Terminal Ltd - P0419	Bond	1,000,000.00
P0419	Zenith Energy Bantry Bay Terminal Ltd - P0419	Insurance	64,000,000.00
P0442	Irish Distillers Limited - P0442	Bond	4,148,836.00
P0480	Dublin Aerospace Limited - P0480	Bond	960,975.00
P0483	Huntstown Power Company Limited - P0483	Letter of Credit	3,071,466.00
P0483	Huntstown Power Company Limited - P0483	Insurance	1,643,764.00
P0486	Synergen Power Limited - P0486	Parent Company Guarantee	4,258,411.00
P0487	Breedon Cement Ireland Limited - P0487	Parent Company Guarantee	7,219,855.00
P0516	Boliden Tara Mines Limited - P0516	Bond	7,500,000.00
P0516	Boliden Tara Mines Limited - P0516	Bond	12,800,000.00
P0517	Galmoy Mines Limited - P0517	Secured Bank Account	229,637.70
P0517	Galmoy Mines Limited - P0517	Insurance	3,049,150.00
P0517	Galmoy Mines Limited - P0517	Secured Bank Account	950,000.00

Reg	Licensee	FP Instrument Type	Value
P0517	Galmoy Mines Limited - P0517	Secured Bank Account	1,044,160.50
P0519	Saint-Gobain Construction Products (Ireland) Limited - P0519	Parent Company Guarantee	1,516,042.00
P0519	Saint-Gobain Construction Products (Ireland) Limited - P0519	Bond	6,251,447.00
P0522	Barclay Chemicals Manufacturing Limited - P0522	Insurance	2,955,878.00
P0522	Barclay Chemicals Manufacturing Limited - P0522	Secured Bank Account	2,176,900.78
P0561	Electricity Supply Board (Aghada) - P0561	Parent Company Guarantee	4,456,594.00
P0571	Merck Millipore Limited - P0571	Parent Company Guarantee	4,599,406.00
P0578	Electricity Supply Board (Marina) - P0578	Parent Company Guarantee	3,232,000.00
P0605	Electricity Supply Board (Moneypoint) - P0605	Parent Company Guarantee	8,397,428.00
P0605	Electricity Supply Board (Moneypoint) - P0605	Parent Company Guarantee	9,590,438.00
P0606	SSE Generation Ireland Limited (Great Island) - P0606	Parent Company Guarantee	15,621,856.00
P0607	SSE Generation Ireland Limited (Tarbert) - P0607	Parent Company Guarantee	9,226,752.00
P0610	Electricity Supply Board (Lough Ree Power) - P0610	Parent Company Guarantee	2,410,139.00
P0610	Electricity Supply Board (Lough Ree Power) - P0610	Parent Company Guarantee	5,152,279.00
P0611	Electricity Supply Board (West Offaly Power) - P0611	Letter of Credit	2,891,684.00
P0611	Electricity Supply Board (West Offaly Power) - P0611	Parent Company Guarantee	6,525,237.00
P0690	Decotek Automotive Limited - P0690	Insurance	1,305,220.00
P0690	Decotek Automotive Limited - P0690	Bond	232,568.00
P0700	Tynagh Energy Limited - P0700	Insurance	2,318,274.00
P0700	Tynagh Energy Limited - P0700	Letter of Credit	745,000.00
P0738	Vermilion Exploration and Production Ireland Limited - P0738	Parent Company Guarantee	5,213,969.00
P0738	Vermilion Exploration and Production Ireland Limited - P0738	Parent Company Guarantee	11,754,391.00
P0777	Energia Power Generation Limited - P0777	Letter of Credit	3,191,537.00
P0777	Energia Power Generation Limited - P0777	Insurance	1,643,764.00
P0826	Cooley Distillery Unlimited Company - P0826	Bond	442,373.00
P0826	Cooley Distillery Unlimited Company - P0826	Bond	459,876.00
P0980	William Grant & Sons Irish Manufacturing Limited - P0980	Bond	1,607,098.00
P0980	William Grant & Sons Irish Manufacturing Limited - P0980	Insurance	1,316,344.00
P0997	The Hammond Lane Metal Company Limited - P0997	Bond	3,319,263.00
P1002	The Hammond Lane Metal Company Limited - P1002	Bond	2,364,568.00
P1006	Galway Metal Company Limited - P1006	Bond	176,122.50
P1006	Galway Metal Company Limited - P1006	Insurance	469,983.00
P1011	Drogheda Port Company (Tom Roes Point Port Terminal) - P1011	Bond	755,000.00
P1011	Drogheda Port Company (Tom Roes Point Port Terminal) - P1011	Bond	600,000.00
P1015	Glanway Limited - P1015	Bond	836,000.00
P1015	Glanway Limited - P1015	Bond	273,000.00
P1015	Glanway Limited - P1015	Insurance	1,357,429.00
P1022	Dublin Port Company - P1022	Bond	5,867,784.00
P1076	KMK Metals Recycling Limited - P1076	Insurance	2,257,056.00
P1076	KMK Metals Recycling Limited - P1076	Bond	151,597.00
P1093	Soltec (Ireland) Limited - P1093	Bond	88,023.00
P1093	Soltec (Ireland) Limited - P1093	Insurance	2,105,400.00
W0001	North Kerry Landfill Site - W0001	Form of Assurance	10,297,771.00
W0003	Ballymount Baling Station - W0003	Insurance	1,250,000.00

Reg	Licensee	FP Instrument Type	Value
W0004	Arthurstown Landfill - W0004	Form of Assurance	16,932,284.00
W0009	Balleally Landfill - W0009	Form of Assurance	26,959,406.00
W0012	Kinsale Road Landfill - W0012	Form of Assurance	28,384,603.00
W0013	Carrowbrowne Landfill Site - W0013	Form of Assurance	5,087,213.53
W0017	Gortadroma Landfill Site - W0017	Form of Assurance	4,433,467.47
W0020	Scotch Corner Landfill - W0020	Form of Assurance	18,040,324.00
W0021	Derrinnumera Landfill Facility - W0021	Form of Assurance	11,451,113.00
W0023	Raffeen Landfill Site - W0023	Form of Assurance	13,376,050.00
W0024	Ballynacarrick Landfill Site - W0024	Form of Assurance	7,500,000.00
W0025	Powerstown Landfill Site - W0025	Form of Assurance	4,274,463.00
W0026	Kyletalesha Landfill - W0026	Form of Assurance	1,986,048.00
W0028	Ballydonagh Landfill - W0028	Form of Assurance	2,005,000.00
W0030	Dunmore Landfill - W0030	Form of Assurance	2,689,812.00
W0034	Dundalk Landfill & Civic Waste Facility - Dundalk Town Council - W0034	Form of Assurance	3,211,582.00
W0036	Indaver Ireland Limited (Tolka Quay Road), Dublin Port - W0036	Bond	3,841,273.00
W0036	Indaver Ireland Limited (Tolka Quay Road), Dublin Port - W0036	Bond	1,232,722.00
W0039	Starrus Eco Holdings Limited (Ballymount) - W0039	Bond	1,462,948.00
W0041	Enva Ireland Limited (Shannon) - W0041	Bond	2,277,414.20
W0041	Enva Ireland Limited (Shannon) - W0041	Insurance	3,610,477.00
W0044	Thorntons Recycling Centre (Ballyfermot) - W0044	Bond	1,146,859.84
W0045	Key Waste Management Limited - W0045	Insurance	591,417.00
W0045	Key Waste Management Limited - W0045	Bond	303,624.00
W0049	Clonbulloge Ash Repository - W0049	Bond	1,816,039.00
W0049	Clonbulloge Ash Repository - W0049	Insurance	585,806.55
W0050	Veolia Environmental Services Technical Solutions Ltd, Corrin, Fermoy, Cork - W0050	Bond	1,083,457.00
W0050	Veolia Environmental Services Technical Solutions Ltd, Corrin, Fermoy, Cork - W0050	Bond	3,912,142.00
W0053	Starrus Eco Holdings Limited (Fassaroe) - W0053	Insurance	1,429,825.00
W0053	Starrus Eco Holdings Limited (Fassaroe) - W0053	Mortgage Charge	53,244.78
W0054	SRCL Limited (Kylemore Road) trading as Eco-Safe Systems Ltd, Allied Industrial Estate, Kylemore Road, Dublin 10 - W0054	Insurance	6,991,993.00
W0054	SRCL Limited (Kylemore Road) trading as Eco-Safe Systems Ltd, Allied Industrial Estate, Kylemore Road, Dublin 10 - W0054	Bond	634,987.00
W0055	SRCL Limited - W0055	Parent Company Guarantee	265,890.00
W0058	Starrus Eco Holdings Limited (Sligo) - W0058	Insurance	1,012,674.00
W0058	Starrus Eco Holdings Limited (Sligo) - W0058	Mortgage Charge	11,310.67
W0059	Ballaghaderreen Landfill - W0059	Form of Assurance	2,176,061.00
W0060	Whiteriver Landfill Site - W0060	Form of Assurance	8,199,130.00
W0062	Churchtown Landfill - W0062	Form of Assurance	1,103,385.00
W0067	Rathroeen Landfill - W0067	Form of Assurance	10,283,298.00
W0068	Youghal Landfill - W0068	Form of Assurance	25,280,535.00
W0071	Marlinstown Landfill - W0071	Form of Assurance	926,642.00
W0074	Donohill Landfill - W0074	Form of Assurance	11,941,031.00
W0079	Starrus Eco Holdings Limited (Cookstown, Tallaght) - W0079	Insurance	992,738.00
W0079	Starrus Eco Holdings Limited (Cookstown, Tallaght) - W0079	Mortgage Charge	4,806.34

Reg	Licensee	FP Instrument Type	Value
W0081	Kilcullen Landfill Limited - W0081	Insurance	1,843,500.00
W0081	Kilcullen Landfill Limited - W0081	Letter of Credit	4,000,000.00
W0081	Kilcullen Landfill Limited - W0081	Mortgage Charge	766,028.01
W0081	Kilcullen Landfill Limited - W0081	Mortgage Charge	2,046,210.09
W0082	Starrus Eco Holdings Limited (Dock Road) - W0082	Mortgage Charge	100,480.67
W0082	Starrus Eco Holdings Limited (Dock Road) - W0082	Insurance	2,112,643.00
W0089	Derryconnell Landfill - W0089	Form of Assurance	4,131,511.00
W0091	Bailieborough Landfill - W0091	Form of Assurance	1,445,519.00
W0099	Safety Kleen Ireland Ltd - W0099	Parent Company Guarantee	287,135.00
W0099	Safety Kleen Ireland Ltd - W0099	Insurance	2,317,365.00
W0104	Bord Na Móna Recycling Limited - W0104	Parent Company Guarantee	1,746,605.00
W0106	Bruscar Bhearna Teoranta (Carrowbrowne) - W0106	Secured Bank Account	725,782.50
W0106	Bruscar Bhearna Teoranta (Carrowbrowne) - W0106	Insurance	865,888.00
W0113	KMK Metals Recycling Limited - W0113	Insurance	2,257,877.00
W0113	KMK Metals Recycling Limited - W0113	Bond	330,450.00
W0115	Soltec (Ireland) Limited - W0115	Bond	134,309.00
W0115	Soltec (Ireland) Limited - W0115	Insurance	2,056,800.00
W0116	Starrus Eco Holdings Limited (Butlerstown) - W0116	Insurance	703,266.00
W0116	Starrus Eco Holdings Limited (Butlerstown) - W0116	Mortgage Charge	5,015.31
W0129	Integrated Materials Solutions Limited Partnership - W0129	Insurance	358,227.00
W0129	Integrated Materials Solutions Limited Partnership - W0129	Secured Bank Account	927,906.00
W0131	Bord Na Móna Recycling Limited - W0131	Bond	3,404,345.00
W0136	Starrus Eco Holdings Limited (Munster) - W0136	Mortgage Charge	102,545.31
W0136	Starrus Eco Holdings Limited (Munster) - W0136	Insurance	2,216,617.00
W0140	Starrus Eco Holdings Limited (Slane) - W0140	Insurance	1,292,176.00
W0140	Starrus Eco Holdings Limited (Slane) - W0140	Bond	396,728.00
W0144	Oxigen Environmental (Coes Road) - W0144	Insurance	565,000.00
W0145	Enva Ireland Limited (Cork) - W0145	Bond	178,590.00
W0145	Enva Ireland Limited (Cork) - W0145	Insurance	487,696.00
W0146	Knockharley Landfill - W0146	Mortgage Charge	1,471,391.10
W0146	Knockharley Landfill - W0146	Mortgage Charge	3,930,372.35
W0146	Knockharley Landfill - W0146	Insurance	3,502,650.00
W0146	Knockharley Landfill - W0146	Bond	4,000,000.00
W0148	City Bin Co Ltd - W0148	Insurance	313,896.00
W0148	City Bin Co Ltd - W0148	Bond	66,105.00
W0151	Murphy Concrete Manufacturing Limited - W0151	Secured Bank Account	515,399.00
W0152	Oxigen Environmental (Robinhood) - W0152	Secured Bank Account	756,000.00
W0152	Oxigen Environmental (Robinhood) - W0152	Insurance	610,000.00
W0156	Mill Road Estates Limited - W0156	Secured Bank Account	189,027.34
W0156	Mill Road Estates Limited - W0156	Insurance	75,267.50
W0165	Ballynagran Residual Landfill - W0165	Insurance	3,403,003.00
W0165	Ballynagran Residual Landfill - W0165	Letter of Credit	4,000,000.00
W0165	Ballynagran Residual Landfill - W0165	Mortgage Charge	1,437,580.89
W0165	Ballynagran Residual Landfill - W0165	Mortgage Charge	3,840,058.70

Reg	Licensee	FP Instrument Type	Value
W0167	Indaver Ireland Limited (Duleek) - W0167	Bond	3,886,988.00
W0167	Indaver Ireland Limited (Duleek) - W0167	Bond	4,081,489.00
W0169	Mulleady's Limited (Drumlish) - W0169	Bond	90,836.00
W0169	Mulleady's Limited (Drumlish) - W0169	Insurance	664,499.00
W0177	Starrus Eco Holdings Limited (Waterford City) - W0177	Insurance	1,000,012.00
W0177	Starrus Eco Holdings Limited (Waterford City) - W0177	Mortgage Charge	15,429.69
W0178	East Galway Residual Landfill Site - W0178	Form of Assurance	16,492,717.00
W0183	Starrus Eco Holdings Limited (Millenium Business Park) - W0183	Insurance	2,003,592.00
W0183	Starrus Eco Holdings Limited (Millenium Business Park) - W0183	Mortgage Charge	25,192.83
W0184	Enva Ireland Limited (Portlaoise) - W0184	Insurance	4,133,343.00
W0184	Enva Ireland Limited (Portlaoise) - W0184	Bond	2,255,641.30
W0185	Rilta Environmental - W0185	Bond	153,190.00
W0185	Rilta Environmental - W0185	Insurance	1,894,320.00
W0188	Starrus Eco Holdings Limited (Greenogue) - W0188	Insurance	992,738.00
W0188	Starrus Eco Holdings Limited (Greenogue) - W0188	Mortgage Charge	22,586.77
W0192	Enva Ireland Limited - W0192	Bond	1,362,077.25
W0192	Enva Ireland Limited - W0192	Insurance	4,009,452.50
W0194	Bord Na Móna Recycling Limited - W0194	Parent Company Guarantee	100,351.00
W0194	Bord Na Móna Recycling Limited - W0194	Bond	690,109.00
W0196	JFK Environmental Limited - W0196	Bond	281,698.00
W0196	JFK Environmental Limited - W0196	Insurance	1,074,240.00
W0197	Mulleady's Limited (Mullingar) - W0197	Bond	47,428.00
W0197	Mulleady's Limited (Mullingar) - W0197	Insurance	274,683.00
W0201	Drehid Waste Management Facility - W0201	Insurance	3,681,720.00
W0201	Drehid Waste Management Facility - W0201	Bond	13,030,634.00
W0205	Green Circular Economy Unlimited Company - W0205	Bond	1,079,468.00
W0205	Green Circular Economy Unlimited Company - W0205	Insurance	1,308,160.00
W0211	ERAS ECO Ltd - W0211	Insurance	2,498,470.00
W0211	ERAS ECO Ltd - W0211	Bond	128,280.00
W0217	Killarney Waste Disposal Unlimited Company - W0217	Insurance	905,019.00
W0217	Killarney Waste Disposal Unlimited Company - W0217	Bond	443,748.00
W0222	Bord Na Móna Recycling Limited - W0222	Secured Bank Account	878,585.50
W0227	Padraig Thornton Waste Disposal Limited - W0227	Insurance	725,935.00
W0227	Padraig Thornton Waste Disposal Limited - W0227	Bond	178,653.94
W0232	Dublin Waste to Energy Limited - W0232	Insurance	4,036,000.00
W0232	Dublin Waste to Energy Limited - W0232	Letter of Credit	7,414,029.00
W0238	Starrus Eco Holdings Limited - W0238	Bond	119,645.00
W0238	Starrus Eco Holdings Limited - W0238	Insurance	1,326,294.00
W0253	Clean (Irl) Refuse & Recycling Co. - W0253	Bond	581,381.00
W0253	Clean (Irl) Refuse & Recycling Co. - W0253	Insurance	1,089,163.00
W0254	Walshestown Restoration Ltd - W0254	Bond	182,000.00
W0254	Walshestown Restoration Ltd - W0254	Bond	228,045.00
W0254	Walshestown Restoration Ltd - W0254	Bond	88,000.00
W0254	Walshestown Restoration Ltd - W0254	Insurance	205,695.00

Reg	Licensee	FP Instrument Type	Value
W0257	Country Clean Recycling Unlimited Company - W0257	Secured Bank Account	693,858.00
W0257	Country Clean Recycling Unlimited Company - W0257	Insurance	1,182,547.00
W0261	Starrus Eco Holdings Limited (Cappagh) - W0261	Insurance	1,260,021.00
W0261	Starrus Eco Holdings Limited (Cappagh) - W0261	Bond	123,256.00
W0263	Irish Packaging Recycling - W0263	Bond	82,840.00
W0263	Irish Packaging Recycling - W0263	Insurance	1,300,593.00
W0267	Hi-Volt Ireland Limited - W0267	Insurance	3,946,794.00
W0279	Glassco Recycling Limited - W0279	Bond	384,117.00
W0279	Glassco Recycling Limited - W0279	Insurance	433,501.00
W0286	Enva Ireland Limited - W0286	Bond	200,000.00
W0286	Enva Ireland Limited - W0286	Insurance	1,455,000.00
W0291	Forge Hill Recycling Unlimited Company - W0291	Bond	163,960.00
W0291	Forge Hill Recycling Unlimited Company - W0291	Insurance	632,309.00